



VILLA SANCHES
LISBOA



FINE LIVING

by Vogue Homes



THINK GLOBAL LIVE LOCAL



WELCOME to VILLA SANCHES
Campo de Ourique



VILLA SANCHES
CAMPO DE OURIQUE
LISBON



UPTOWN LISBON

WWW.VOGUE-HOMES.COM

The orthogonal streets of Campo de Ourique are one of Lisbon's most interesting and sought- after neighbourhoods.

From its diversity in commerce, culture, schools, parks, workshops and restaurants, there's nothing you won't find here. Old spaces with great tradition, from the Campo de Ourique Market to the Fernando Pessoa house, where the poet lived, are a good example of this.

VILLA SANCHES ENTRY



VILLA SANCHES ENTRY



VILLA SANCHES ABOUT THE PROJECT

NEW URBAN EXPERIENCES

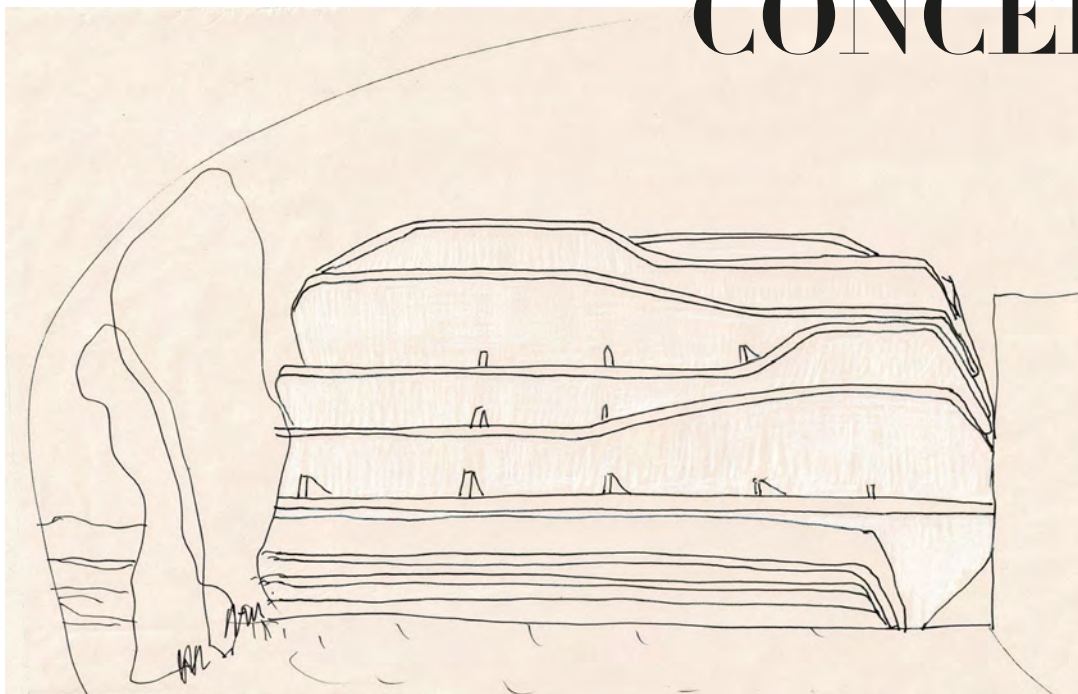
The "**Villa Sanches**" project enhances calm and neighbourly relations, reconciling the interiority of the house with views of Monsanto Park and Lisbon's urban landscape. In an integrated and sustainable architectural solution, it reinterprets the proportions and rules of the surrounding buildings.

The project is committed to contemporary design in order to provide new urban experiences. The collective outdoor areas are distributed along a dynamic path that guarantees great permeability.



ARCHITECTURE LESS IS MORE

CONCEPT



“ It was intended for the new residential building to be volumetrically integrated with the nearby structures.

The elevation's design suggests continuing the building's architecture eastward and giving the recessed guard a gigantic expression to mimic a new platband. The modern architecture interprets the norms and proportions of the structures on Rua de Campo de Ourique..

ABOUT THE PROJECT MATERIALS



Concrete



Copper



Wood

LOCATION
CAMPO DE OURIQUE



LOCATION

CAMPO DE OURIQUE



- ① Monsanto Park ② Schools ③ C. C. Amoreiras ④ Garden ⑤ Campo de Ourique Market
⑥ Church Sto. Condestável ⑦ Cementery Prazeres ⑧ Tram 28 - Graça ⑨ Jardim da Estrela

LOCATION

CAMPO DE OURIQUE

HISTORY



The Campo de Ourique neighbourhood was defined in a plan.

Approved in November 1878, this urban planning project was one of the first to be carried out by Lisbon City Council under the responsibility of engineer Frederico Ressano Garcia. In the 19th century, the remaining area of Campo de Ourique was divided into five farms.

The building process began in April 1879 with the construction of eight buildings and a group of squat houses. This first block, formed by the intersection of Rua Ferreira Borges, Rua Infancia 16, and Rua Correia Teles, reflects the innovative nature of the plan, based on geometric principles that were modeled - as streets, sidewalks or blocks - according to the characteristics of the areas to be urbanized.

TYPOLOGIES



A modern, minimalist interior space featuring a dining area with a wooden table and chairs, a living area with a grey sofa and a white armchair, and a large wooden partition wall. The ceiling is made of exposed concrete, and the floor is made of wide wooden planks. Large windows provide natural light and a view of the outdoors.



VILLA SANCHES
CAMPO DE OURIQUE
Block 2 – 3 bedrooms with garden and pool



VILLA SANCHES
CAMPO DE OURIQUE
Block 2 – 3 bedrooms with garden and pool



A large, curved, light-colored concrete structure with a wooden floor. The interior features a dining area with a long wooden table and several chairs. A glass-enclosed kitchen area is visible in the background. The structure is illuminated by natural light, creating a bright and airy atmosphere.

VILLA SANCHES
CAMPO DE OURIQUE
Block 2 - T4



A modern kitchen interior with a white countertop and a built-in oven. The kitchen is open to a living area with a large potted plant and a glass partition. The ceiling is made of exposed concrete, and the floor is made of light-colored wood.



A wide-angle photograph of a modern, minimalist living and dining area. The room features light-colored wood plank flooring and large windows that offer a view of a cityscape. In the foreground, a brown leather chaise lounge sits on a grey textured rug. A small stack of books, including one titled 'NEW YORK', is placed on the rug. In the background, a light-colored sofa with several cushions is positioned against the wall. A dining table with a dark, patterned top and light-colored chairs is visible on the right. A large abstract painting with white, blue, and orange shapes hangs on the wall. A tall potted plant is located near the windows. The overall aesthetic is clean and contemporary.



A modern, minimalist living room with a large window overlooking a city. The room features a concrete ceiling, wooden floor, and a large potted plant. The furniture includes a beige sofa, a leather ottoman, and a coffee table. A large black marble table is visible in the foreground.



A modern bedroom interior with a curved, textured concrete ceiling. The room features light wood plank flooring. On the left, a grey armchair with dark wood legs holds a brown leather bag. Next to it is a stack of books. A large bed with a grey headboard is dressed in white linens and a grey throw blanket. A large window with a wooden frame and light-colored curtains provides a view of greenery outside. A potted plant sits on the windowsill. A small black side table with a glass of water is next to the bed.



A modern rooftop terrace with a large glass wall, wooden deck, and outdoor furniture. The terrace features a large planter box with several tall, green, feathery plants. Two wooden armchairs with blue cushions are positioned on the deck, along with a small round wooden table holding a few items. The glass wall provides a view into the interior, which includes a large sofa and a floor lamp. The sky is blue with some clouds.





VILLA SANCHES
CAMPO DE OURIQUE
Block 2 - T2 Penthouse



VILLA SANCHES
CAMPO DE OURIQUE

The graphic consists of four square frames, each with a thick, textured brown border. The frames are stacked and offset from one another, creating a sense of depth. The central frame is the most prominent, while the others are partially visible behind it.

**FLOOR
PLANS**

BLOCK 1
FLOORS 0, 1 and 2

a T2 Duplex

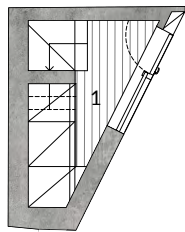
132.54 sq.m
GROSS INDOOR AREA

28.30 sq.m
GROSS OUTDOOR AREA

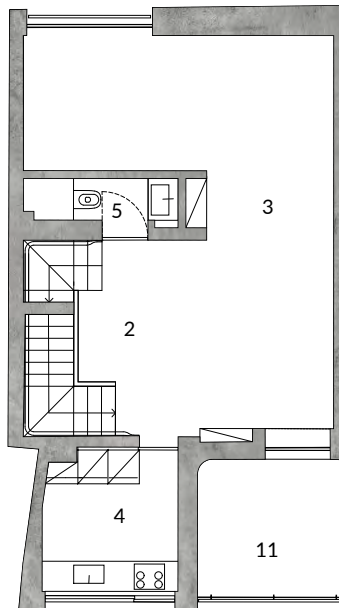
2
PARKING

1
STORAGE ROOM

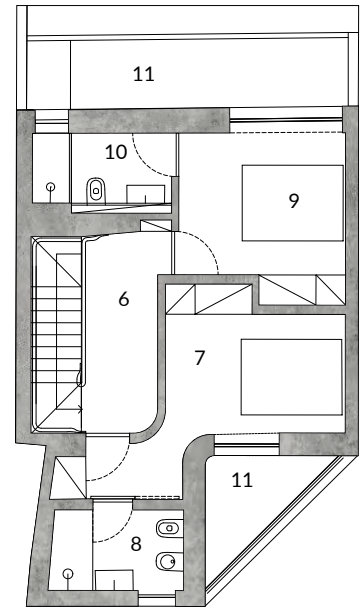
FLOOR 0



FLOOR 1



PISO 2



1 Hall 6.15 sq.m

2 Circulation 15.70 sq.m
3 Living room 39.69 sq.m
4 Kitchen 11.09 sq.m
5 I.S. 3.97 sq.m

6 Circulation 12.79 sq.m
7 Bedroom 12.93 sq.m
8 I.S. 6.96 sq.m
9 Suite 16.20 sq.m
10 I.S. Suite 7.06 sq.m
11 Balconies 28.30 sq.m

BLOCK 2 FLOOR 0 **b** T3

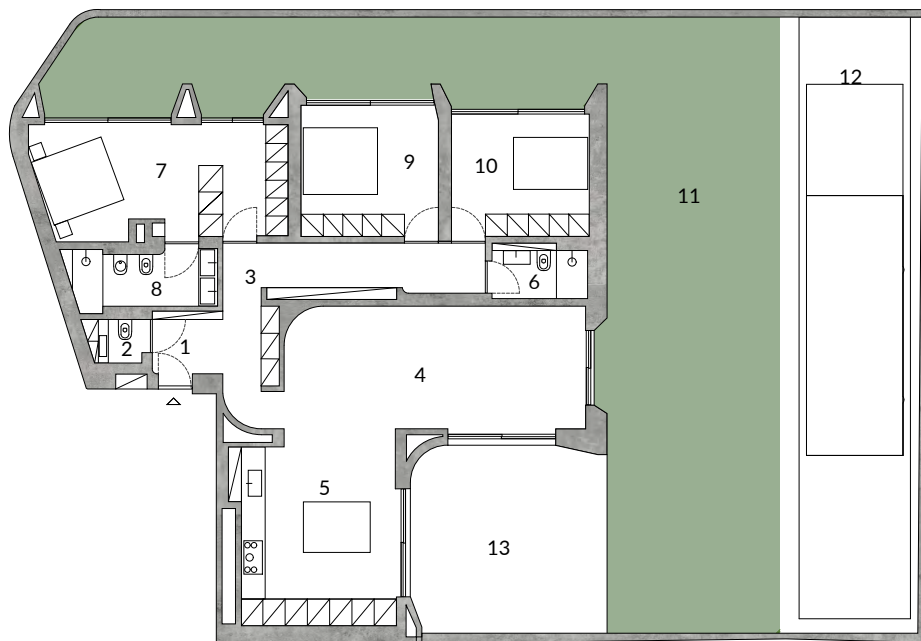
155.39 sq.m
GROSS INDOOR AREA

327.45 sq.m
GROSS OUTDOOR AREA

3
PARKING

1
STORAGE ROOM

FLOOR 0



1 Hall	3.84 sq.m
2 I.S.	2.84 sq.m
3 Circulation	18.27 sq.m
4 Living room	32.15 sq.m
5 Kitchen	28.07 sq.m
6 I.S.	5.42 sq.m

7 Suite	25.68 sq.m
8 I.S. Suite	7.75 sq.m
9 Bedroom	15.52 sq.m
10 Bedroom	15.85 sq.m
11 Garden	214.50 sq.m
12 Pool	85.15 sq.m
13 Terrace	27.80 sq.m

BLOCK 2 FLOOR 1

C T4

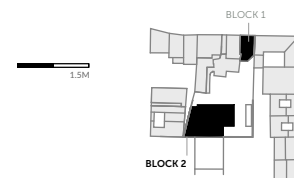
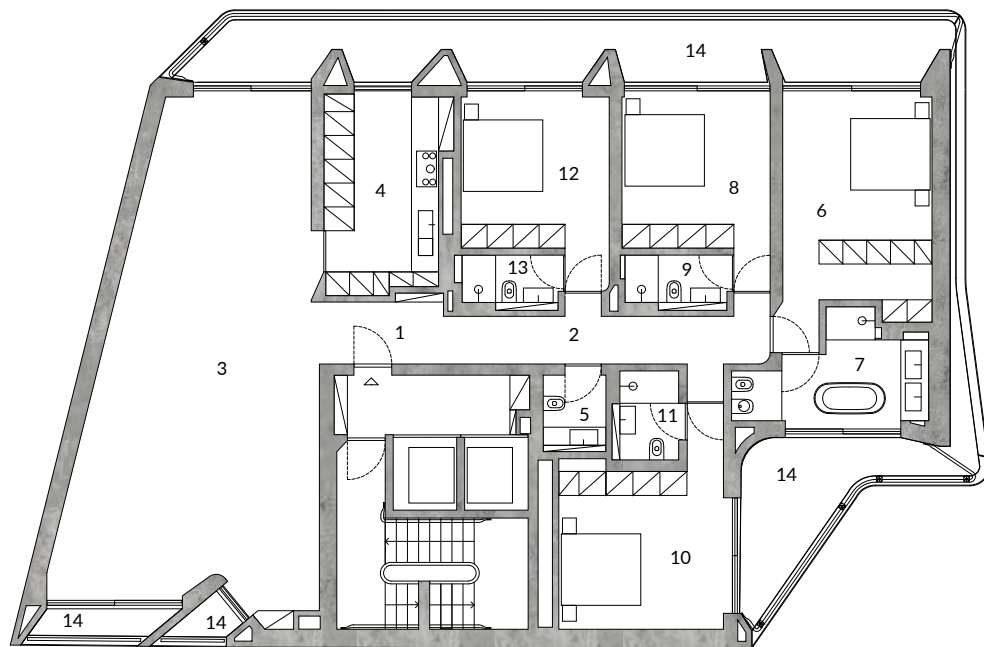
242.13 sq.m
GROSS INDOOR AREA

58.90 sq.m
GROSS OUTDOOR AREA

3
PARKING

1
STORAGE ROOM

FLOOR 1



1 Hall	6.32 sq.m	8 Suite	18.42 sq.m
2 Circulation	13.39 sq.m	9 I.S. Suite	4.59 sq.m
3 Living room	81.33 sq.m	10 Suite	25.05 sq.m
4 Kitchen	19.58 sq.m	11 I.S. Suite	4.70 sq.m
5 I.S.	4.07 sq.m	12 Suite	18.48 sq.m
6 Suite	27.10 sq.m	13 I.S. Suite	4.39 sq.m
7 I.S. Suite	14.70 sq.m	14 Balcony	58.90 sq.m

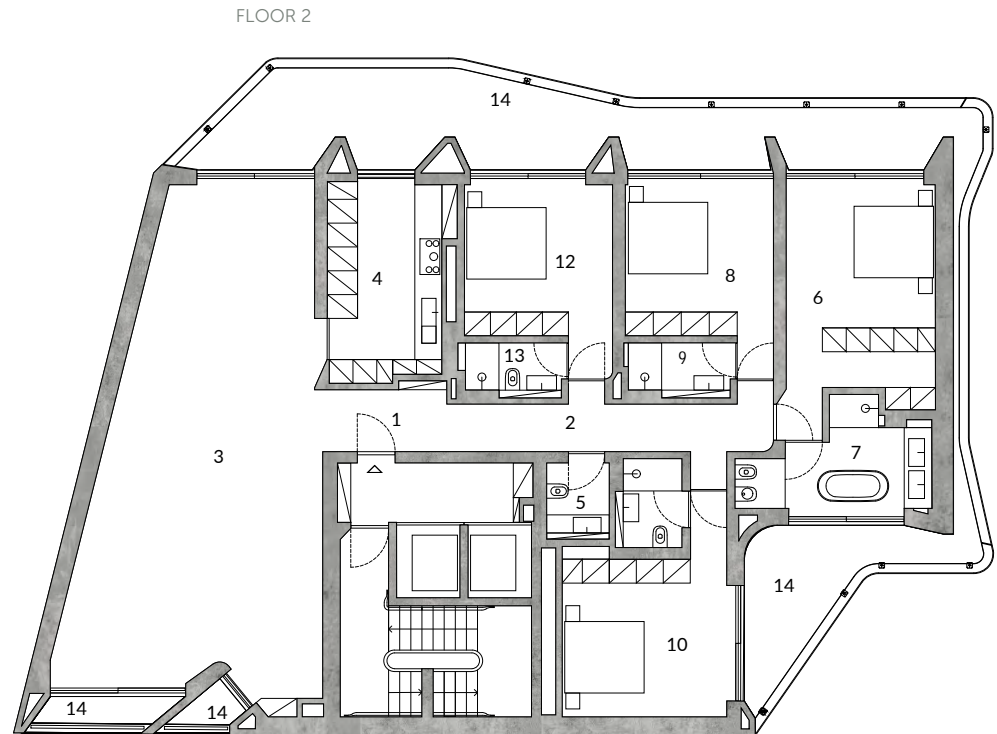
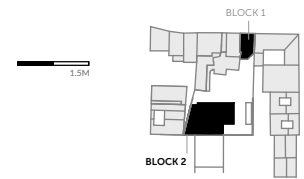
BLOCK 2 FLOOR 2 d T4

242.13 sq.m
GROSS INDOOR AREA

67.20 sq.m
GROSS OUTDOOR AREA

3
PARKING

1
STORAGE ROOM



1 Hall	6.32 sq.m	8 Suite	18.42 sq.m
2 Circulation	13.39 sq.m	9 I.S. Suite	4.59 sq.m
3 Living room	81.33 sq.m	10 Suite	25.05 sq.m
4 Kitchen	19.58 sq.m	11 I.S. Suite	4.70 sq.m
5 I.S.	4.07 sq.m	12 Suite	18.48 sq.m
6 Suite	27.10 sq.m	13 I.S. Suite	4.39 sq.m
7 I.S. Suite	14.70 sq.m	14 Balcony	67.20 sq.m

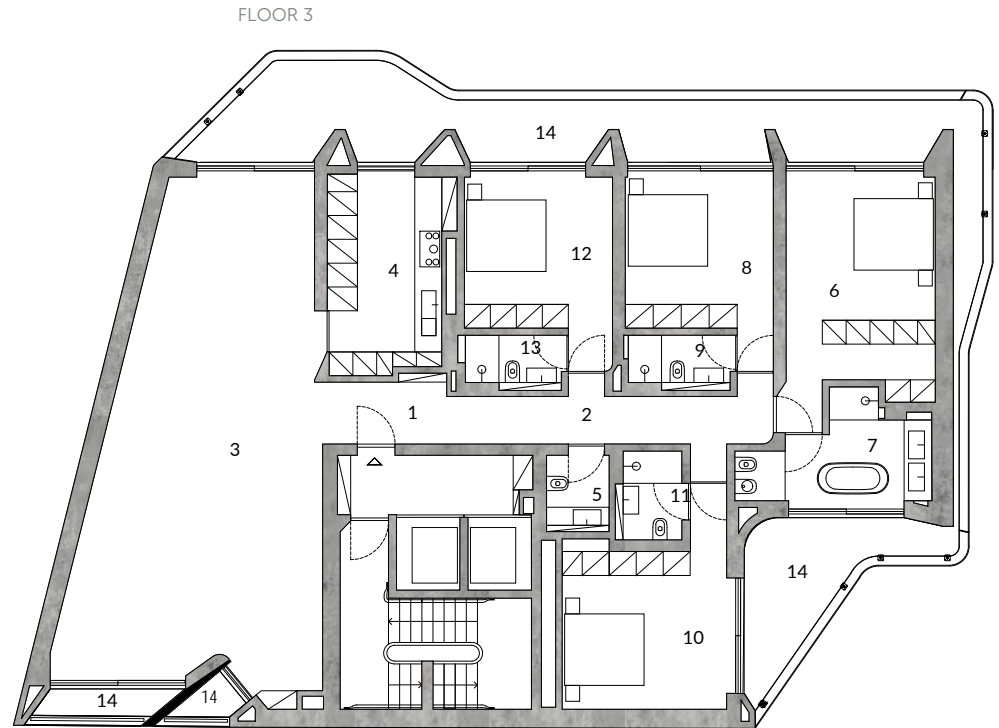
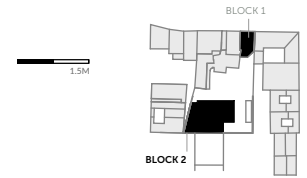
BLOCK 2 FLOOR 3 e T4

242.13 sq.m
GROSS INDOOR AREA

65.00 sq.m
GROSS OUTDOOR AREA

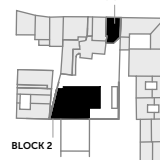
3
PARKING

1
STORAGE ROOM



1 Hall	6.32 sq.m	8 Suite	18.42 sq.m
2 Circulation	13.39 sq.m	9 I.S. Suite	4.59 sq.m
3 Living room	81.33 sq.m	10 Suite	25.05 sq.m
4 Kitchen	19.58 sq.m	11 I.S. Suite	4.70 sq.m
5 I.S.	4.07 sq.m	12 Suite	18.48 sq.m
6 Suite	27.10 sq.m	13 I.S. Suite	4.39 sq.m
7 I.S. Suite	14.70 sq.m	14 Balcony	65.00 sq.m

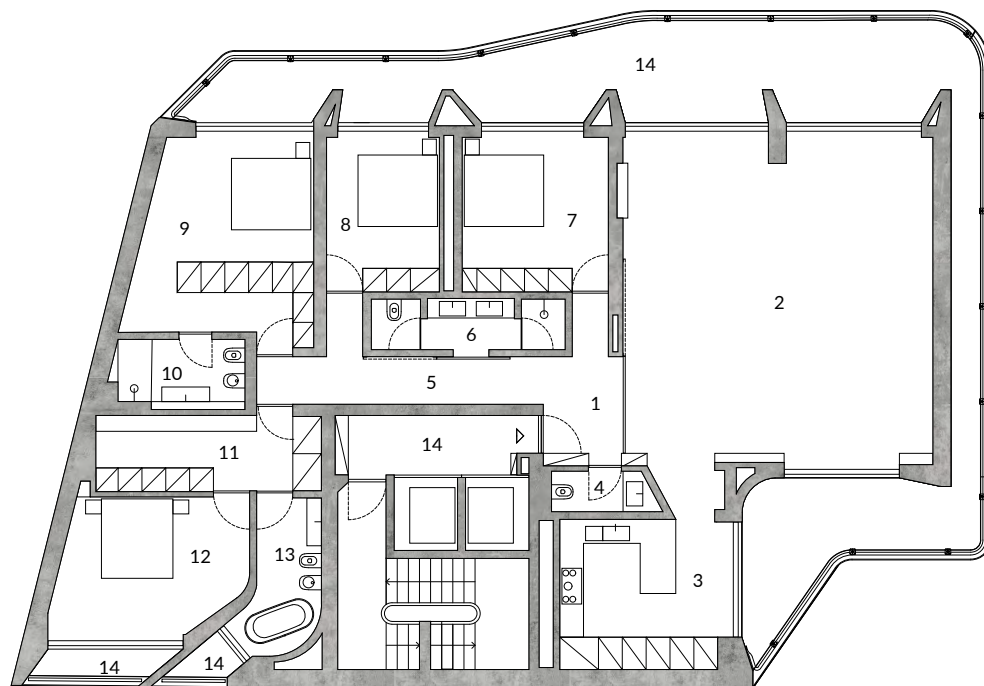
BLOCK 1



BLOCK 2

1.5M

FLOOR 4



BLOCK 2

FLOOR 4

f T4

242.13 sq.m
GROSS INDOOR AREA

65.00 sq.m
GROSS OUTDOOR AREA

3
PARKING

1
STORAGE ROOM

1	Hall	7.85 sq.m	8	Bedroom	14.66 sq.m
2	Living room	73.94 sq.m	9	Suite	27.09 sq.m
3	Kitchen	24.38 sq.m	10	I.S. Suite	7.96 sq.m
4	I.S.	3.52 sq.m	11	Closet	13.30 sq.m
5	Circulation	11.74 sq.m	12	Suite	20.30 sq.m
6	I.S.	7.60 sq.m	13	I.S. Suite	10.73 sq.m
7	Bedroom	18.60 sq.m	14	Varanda	78.20 sq.m

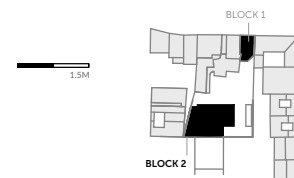
BLOCK 2 FLOOR 5 **g** T4

241.67 sq.m
GROSS INDOOR AREA

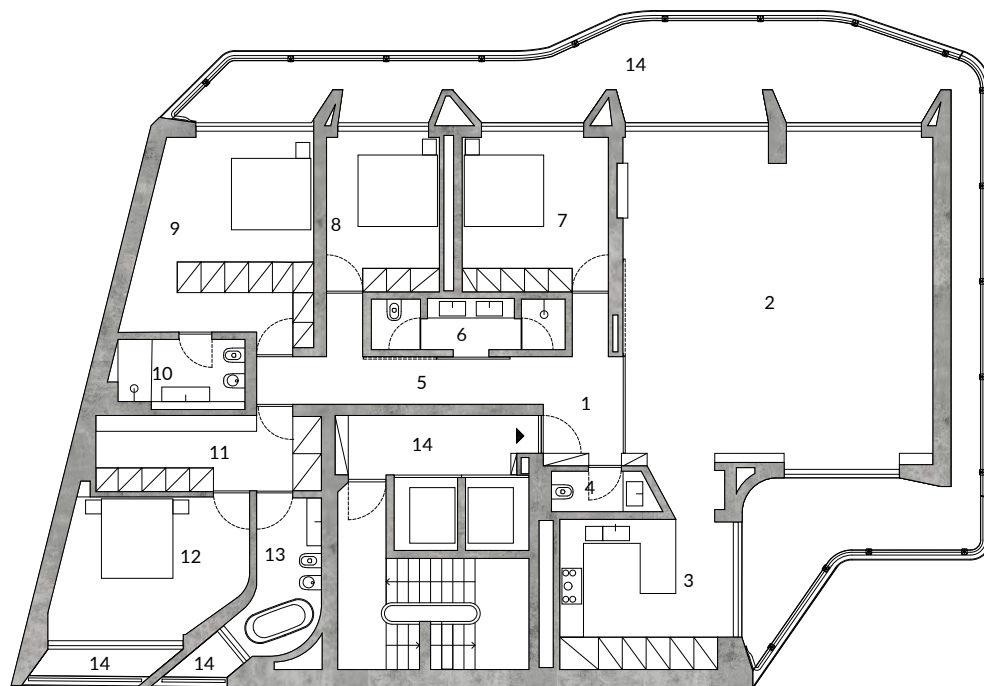
76.20 sq.m
GROSS OUTDOOR AREA

3
PARKING

1
STORAGE ROOM



FLOOR 5



1	Hall	7.85 sq.m	8	Bedroom	14.66 sq.m
2	Living room	73.94 sq.m	9	Suite	27.09 sq.m
3	Kitchenn	24.38 sq.m	10	I.S. Suite	7.96 sq.m
4	I.S.	3.52 sq.m	11	Closet	13.30 sq.m
5	Circulation	11.74 sq.m	12	Suite	20.30 sq.m
6	I.S.	7.60 sq.m	13	I.S. Suite	10.73 sq.m
7	Bedroom	18.60 sq.m	14	Balcony	76.20 sq.m

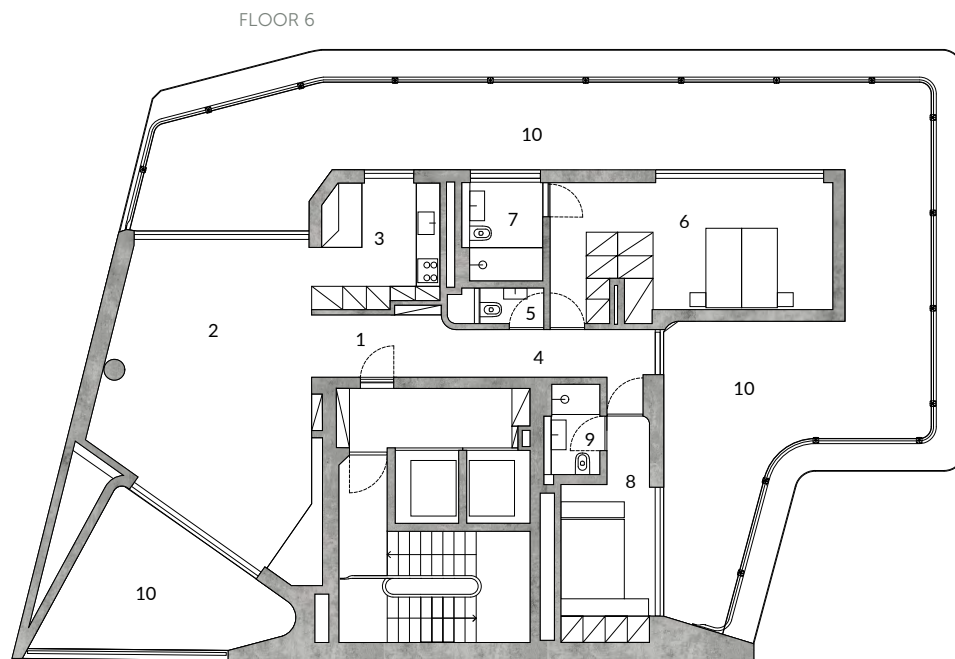
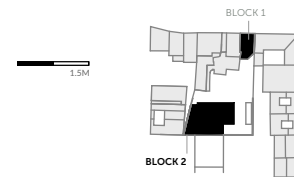
BLOCK 2 FLOOR 6 h T2

138.87 sq.m
GROSS INDOOR AREA

120.00 sq.m
GROSS OUTDOOR AREA

2
PARKING

1
STORAGE ROOM



1	Hall	3.72 sq.m
2	Living room	51.99 sq.m
3	Kitchen	11.96 sq.m
4	Circulation	11.27 sq.m
5	I.S.	2.69 sq.m

6	Suite	28.68 sq.m
7	I.S. Suite	6.94 sq.m
8	Suite	17.40 sq.m
9	I.S. Suite	4.32 sq.m
10	Balcony	120.00 sq.m

FINISHES



OUTDOOR

(Balconies, first floor access)

The balconies and outdoor areas were paved with concrete slabs using the same stereotyped formwork as the building's walls.

Lawned vegetable plot on the private terrace of fraction B, Block 2. Blue Valverde stone flooring in the common area of the entrance hall.

Window frames - Minimal aluminum glazing with thermal cut, brushed gold finish.

Double glazing.

Exterior wooden entrance doors. Balcony railings made of wood and steel props painted brushed gold in the same color as the frames.

INTERIOR SHUTTERS

Brown wood interior shutters, full height to the ceiling, including trim and fittings.

PAVEMENTS

Flooring in the hallways, living rooms, bedrooms and kitchens in chestnut wood flooring.

Bathroom floors in Azul Valverde gray stone.

FLOORBOARDS

15mm inverted corner skirting boards.

CEILINGS

Exposed concrete ceilings with the same stereotomy as the floor.

FINISHES



KITCHENS

Upper modules: chestnut wood and lower modules: ivory lacquered.

Stainless steel top with a satin finish to match the kitchen backsplashes.

APPARATUS

Electric stereo with minimalist "JUNG" knob.

SANITARY FACILITIES

Chrome-finished taps. Washbasin countertop in Azul Valverde stone, suspended base cabinet finished in chestnut wood.

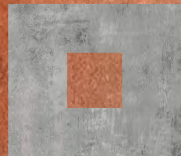
Wall-hung sanitary ware in white glazed ceramic. Custom- made shower trays in Azul Valverde stone.

Freestanding bathtubs (larger bathroom fittings) in white ceramic. Floor-mounted bathtub tap with chrome finish.

Colorless mirrors on washbasins glued to the wall (larger sanitary facilities) mirrors integrated into the cabinets above the countertops in other facilities.



Efficiency and sustainability are fundamental principles
in our company during all phases of the project.



VILLA SANCHES

LISBOA



VOGUE
HOMES